



Presentation blood glucose and death, hospitalization, and future diabetes risk in patients with acute heart failure syndromes

Maneesh Sud, Xuesong Wang, Peter C. Austin, Lorraine L. Lipscombe, Gary E. Newton, Jack V. Tu, Ramachandran S. Vasan, and Douglas S. Lee*

Institute for Clinical Evaluative Sciences, Division of Cardiology, University Health Network University of Toronto, Toronto, ON, Canada

Received 9 February 2014; revised 4 November 2014; accepted 6 November 2014

Purpose

The prognostic implications of blood glucose on a wide range of outcomes including early mortality, hospitalizations, and incident diabetes diagnoses have not been fully elucidated in acute heart failure syndromes (AHFS).

Methods

In a population-based cohort of 16 524 AHFS patients presenting to the emergency department (ED) in Ontario, Canada between 2004 and 2007, we performed a competing risk analysis for 30-day mortality, new diabetes diagnoses, and hospitalization outcomes. Presentation blood glucose concentrations were categorized as follows: 3.9–6.1 [referent], >6.1–7.8, >7.8–9.4, >9.4–11.1, and >11.1 mmol/L.

Results

Among AHFS patients without diabetes presenting to the ED ($n = 9275$), blood glucose >6.1 mmol/L ($n = 5252$, 56.6%) was associated with increased risks of all-cause death [hazard ratio (HR) range: 1.26 (95% CI 1.05–1.50) to 1.50 (95% CI 1.11–2.02)], and cardiovascular death [HR range: 1.28 (95% CI 1.03–1.59) to 1.64 (95% CI 1.16–2.33)]. Among AHFS patients with diabetes ($n = 7249$), presenting blood glucose >11.1 mmol/L ($n = 2286$, 31.5%) was associated with increased risks of all-cause death (HR 1.48, 95% CI 1.10–2.00) and diabetes-related hospitalizations (HR 1.39, 95% CI: 1.20–1.61). Presentation blood glucose >9.4 mmol/L was associated with increased risks of hospitalization for HF or cardiovascular causes [HR range: 1.09 (95% CI 1.02–1.17) to 1.15 (95% CI 1.07–1.24)] in all patients. With higher presentation blood glucose, the risk of incident diabetes diagnosis increased, with adjusted HRs of 1.61 (>6.1–7.8 mmol/L) to 3.61 (>11.1 mmol/L) among those without the condition at baseline (all $P < 0.001$).

Conclusions

Mildly elevated presentation blood glucose was associated with early death, future diabetes, and hospitalizations for diabetes, HF, and cardiovascular causes among patients with AHFS.

Keywords

Heart failure • Mortality • Morbidity • Hospitalization • Diabetes • Complications • Prognosis • Outcomes • Blood glucose

Introduction

Acute heart failure syndromes (AHFS) account for a substantial number of emergency department (ED) visits annually¹ and are associated with high short- and long-term mortality rates.² At the time of presentation, patients with AHFS may demonstrate a wide spectrum of physiological and metabolic perturbations such as hyperglycaemia,

which can occur in up to 40% of patients irrespective of pre-existing diabetes status.^{3,4}

In patients hospitalized for acute myocardial infarction (AMI), hyperglycaemia is a marker for short-term mortality.⁵ The detrimental effects of hyperglycaemia on the ischaemic myocardium act via a shift towards anaerobic myocardial metabolism through enhanced free-fatty acid utilization and impaired glucose utilization,⁶ increased

* Corresponding author: Tel: (+1) 416 340 3861; fax: (+1) 416 340 3036, Email: dlee@ices.on.ca

© The Author 2015. Published by Oxford University Press on behalf of the European Society of Cardiology.

This is an Open Access article distributed under the terms of the Creative Commons Attribution Non-Commercial License (<http://creativecommons.org/licenses/by-nc/4.0/>), which permits non-commercial re-use, distribution, and reproduction in any medium, provided the original work is properly cited. For commercial re-use, please contact journals.permissions@oup.com

mitochondrial oxidative stress⁶ and endothelial dysfunction.⁷ However, attempts to extend the association of blood glucose with mortality, observed among patients with AMI, to those with AHFS have been challenging.^{3,4}

Despite the potential challenges, if blood glucose measurement is prognostically useful, it may be of broad potential utility because it is a rapid, readily available, and inexpensive test that can be used in the acute setting to allow rapid risk stratification for a wide range of potential outcomes and screening strategies. For these reasons, we analysed the early mortality, hospitalization, and future diabetes risk associated with presentation blood glucose in a population-based cohort of AHFS patients.

Methods

Patient selection

Patients aged ≥ 18 years residing in Ontario, Canada, who presented to an ED with a primary diagnosis of HF were eligible for study inclusion. Clinical data were abstracted from two complementary studies and combined in the present analysis: (i) hospitalized HF patients admitted between 1 April 2004 and 31 March 2005 in the Enhanced Feedback For Effective Cardiac Treatment (EFFECT) Phase 2 study⁸ and (ii) patients who were either discharged from the ED or hospitalized between 1 April 2004 and 31 March 2007 in the Emergency Heart Failure Mortality Risk Grade (EHMRG) study.⁹

Included patients were required to (i) meet Framingham HF criteria¹⁰ and (ii) have a primary diagnosis of HF using the International Classification of Diseases, 10th revision (ICD-10-CA code I50) in the ED or hospital discharge abstract. In the event of repeat visits, the initial hospital presentation was considered the index hospital visit. Research ethics approval was obtained from Sunnybrook Health Sciences Center.

Data sources

The EFFECT and EHMRG clinically abstracted data were anonymously linked to validated administrative databases using the patients' unique, encrypted health insurance number. We obtained information on ED visits from the National Ambulatory Care Reporting System and hospitalizations from the Canadian Institute for Health Information Discharge Abstract Database (CIHI-DAD). All-cause deaths were identified from the Registered Persons Database and cardiovascular mortality was identified from the Ontario Registrar General's vital statistics database. The accuracy of these databases has been previously described.^{11–13} Patients were stratified into those with or without pre-existing diabetes using the Ontario Diabetes Database, a validated registry which tracks incident and prevalent patients diagnosed with diabetes in the population.¹⁴ The Ontario Diabetes Database has sensitivity 86% and specificity 97% for identifying prevalent¹⁴ and incident diabetes patients.¹⁵

Definitions and outcomes

We examined the first serum blood glucose measurement drawn upon ED presentation. Patients whose initial blood glucose measurements were obtained >24 h after presentation were excluded. To ensure a homogeneous cohort, patients with initial blood glucose readings at the upper (>33.3 mmol/L) or lower (<3.9 mmol/L) extremes of value were excluded from the analysis, as previously categorized.³ Patients were subsequently classified according to previously defined blood glucose strata: 3.9–6.1 (referent), >6.1 –7.8, >7.8 –9.4, >9.4 –11.1, and >11.1 mmol/L.³

We examined death occurring within 30 days and 1-year after ED presentation and longer-term morbidity outcomes after index hospital

separation (i.e. ED or hospital discharge). Morbidity outcomes occurring from index hospital separation until 31 March 2012 included: (i) cardiovascular readmissions in all patients with or without diabetes, (ii) HF readmissions in all patients, (iii) diabetes-related hospitalizations among patients with pre-existing diabetes, and (iv) *de novo* diagnosis of diabetes among those without pre-existing diabetes.

Cardiovascular hospitalizations included admissions for ischaemic heart disease, HF, or other cardiovascular conditions. HF-specific hospitalizations included admissions where HF was the primary diagnosis. As shown in Supplementary material online, *Appendix S1*, diabetes-related hospitalizations included hospital admissions for hyperglycaemia or hypoglycaemia, skin and soft-tissue infections, and lower extremity amputations not related to malignancy or trauma.¹⁶ Elective hospital admissions with length of stay of ≤ 1 day were not counted as an outcome event in hospitalization analyses.

Statistical analysis

Continuous variables were expressed as medians with interquartile range (IQR: 25th, 75th percentiles) and compared using the Kruskal–Wallis test. Categorical variables were compared using the χ^2 test. We used multiple Cox regression models to estimate the hazard ratios (HRs) for the independent risk of the occurrence of all-cause mortality, adjusting for clinical variables including those comprising the EHMRG and EFFECT HF risk scores, sex, pre-admission medication use (i.e. HMG-coA reductase inhibitor, β -adrenoreceptor antagonist, furosemide, angiotensin converting enzyme (ACE) inhibitor, angiotensin receptor blocker, and spironolactone), and other cardiac and non-cardiac conditions.^{2,9} We also adjusted for administrative data-derived comorbidity models (see Supplementary material online, *Appendix S2*) by scanning all diagnosis codes in the CIHI-DAD within 1 year before the index HF admission.¹⁷ In a similar fashion, Cox proportional hazards regression models were used to model the effect of presentation blood glucose on the cause-specific hazard of the following outcomes: (i) cardiovascular death (treating non-cardiovascular death as a competing risk) and (ii) hospitalizations or *de novo* diabetes diagnosis (treating death as a competing risk). We also assessed the reclassification of mortality risk with presentation blood glucose by examining continuous net reclassification improvement (NRI).¹⁸

To estimate the magnitude of *de novo* diabetes, we determined the number of persons in each presentation blood glucose category for every new diabetes diagnosis at 5-year follow-up. Specifically, we used the formula $1/(P_c - P_i)$, where P_c represents the percentage of *de novo* diabetes diagnoses in patients with a blood glucose 3.9–6.1 mmol/L and P_i , the percentage of patients with *de novo* diabetes in the category of interest, essentially estimating the number needed to harm.¹⁹ Hospital admission rates were calculated per 100 patient-years and 95% confidence intervals (95% CI) were determined using the γ distribution.²⁰ Marginal cumulative incidence functions (CIFs) were constructed to illustrate adjusted differences in diabetes incidence between different levels of blood glucose, and a Fine-Gray competing risk regression model was used to model the incidence of diabetes, accounting for the competing risk of mortality.²¹ Using the fitted regression model, the CIF for diabetes was computed for each subject in the population, assuming that each subject was in the lowest glucose level. The estimated CIFs were averaged over all subjects, and then repeated for each of the different levels of glucose. This allows for comparison of diabetes incidence between populations that differ in glucose levels, but in which the distribution of all other baseline covariates is identical. Missing left ventricular ejection fraction (LVEF ≤ 45 vs. $>45\%$) was imputed using a previously validated model.²² A two-sided P -value of <0.05 was considered statistically significant. All analyses were performed using SAS 9.3 (SAS Institute, Inc., Cary, NC, USA).

Results

Study cohort

Amongst 19 151 HF patients who were either hospitalized or discharged from the ED, the final study cohort comprised 16 524 unique patients (Figure 1). Median age of the cohort was 79 (70–85) years, 8115 (49%) were men, and 9275 (56%) did not have pre-existing diabetes (baseline characteristics, Table 1). There were 5086 (70%) patients with and 3122 (34%) without pre-existing diabetes whose presentation blood glucose value exceeded 7 mmol/L. The median presentation blood glucose was 8.9 (6.7–12.2) mmol/L in diabetes patients and 6.4 (5.6–7.6) mmol/L in non-diabetes patients (see Supplementary material online, Appendix Figure).

Association between presentation blood glucose and mortality

Among diabetes patients, a presentation blood glucose exceeding 11.1 mmol/L was associated with significantly increased risk of all-cause mortality compared with blood glucose 3.9–6.1 mmol/L. The adjusted HR was 1.48 (95% CI 1.10–2.00) as shown in Table 2 ($P = 0.010$). Compared with the EHMRG risk score, there was 15.1% improvement in NRI for 30-day mortality among those with diabetes; however, the confidence limits crossed zero (95% CI $-3.8, 38.5\%$).

In those without pre-existing diabetes, all-cause mortality risk was significantly higher when blood glucose exceeded 6.1 mmol/L (Table 2). The adjusted HRs ranged from 1.26 (95% CI 1.05–1.50) for blood glucose >6.1 –7.8 mmol/L ($P = 0.013$) to 1.50 (95% CI: 1.11–2.02) for values exceeding 11.1 mmol/L ($P = 0.008$). Cardiovascular mortality risk was higher among patients without pre-existing diabetes whose presentation blood glucose exceeded 6.1 mmol/L (Table 2). Adjusted HRs for cardiovascular death ranged from 1.28 (95% CI 1.03–1.59) for blood glucose >6.1 –7.8 mmol/L ($P = 0.024$) to 1.64

(95% CI 1.16–2.33) for values >9.4 –11.1 mmol/L ($P = 0.006$). There was a significant 18.9% improvement in NRI (95%CI: 0.5, 38.8%) for prediction of 30-day mortality by addition of presentation blood glucose to the EHMRG risk score in patients without pre-existing diabetes.

The association between presentation blood glucose and mortality was no longer significant at 1 year in patients with pre-existing diabetes (Supplementary material online, Appendix, Table SA). However, in patients without pre-existing diabetes, the risk of cardiovascular death was elevated albeit attenuated.

Association between presentation blood glucose and cardiovascular hospitalizations

In the pooled cohort of those with and without pre-existing diabetes (median follow-up 388 [IQR: 56–1430] days), there was significantly increased risk of hospitalizations with higher presentation blood glucose (Table 3). Adjusted HRs for cardiovascular hospitalization were 1.12 (95% CI 1.02–1.17) for presentation blood glucose >9.4 –11.1 and 1.09 (95% CI 1.04–1.21) for values >11.1 mmol/L. For HF readmission outcomes, adjusted HRs were 1.15 (95% CI 1.05–1.25) for presentation blood glucose >9.4 –11.1 and 1.15 (95% CI 1.07–1.24) for values >11.1 mmol/L. Similar trends were observed when stratified by diabetes status (Supplementary material online, Appendix, Tables SB and SC).

Association between presentation blood glucose and diabetes hospitalizations

Among patients with pre-existing diabetes examined over median follow-up 722 (IQR: 177–1815) days, presentation blood glucose >11.1 mmol/L was associated with significantly increased risk of diabetes-related hospitalizations (Table 4). When presentation

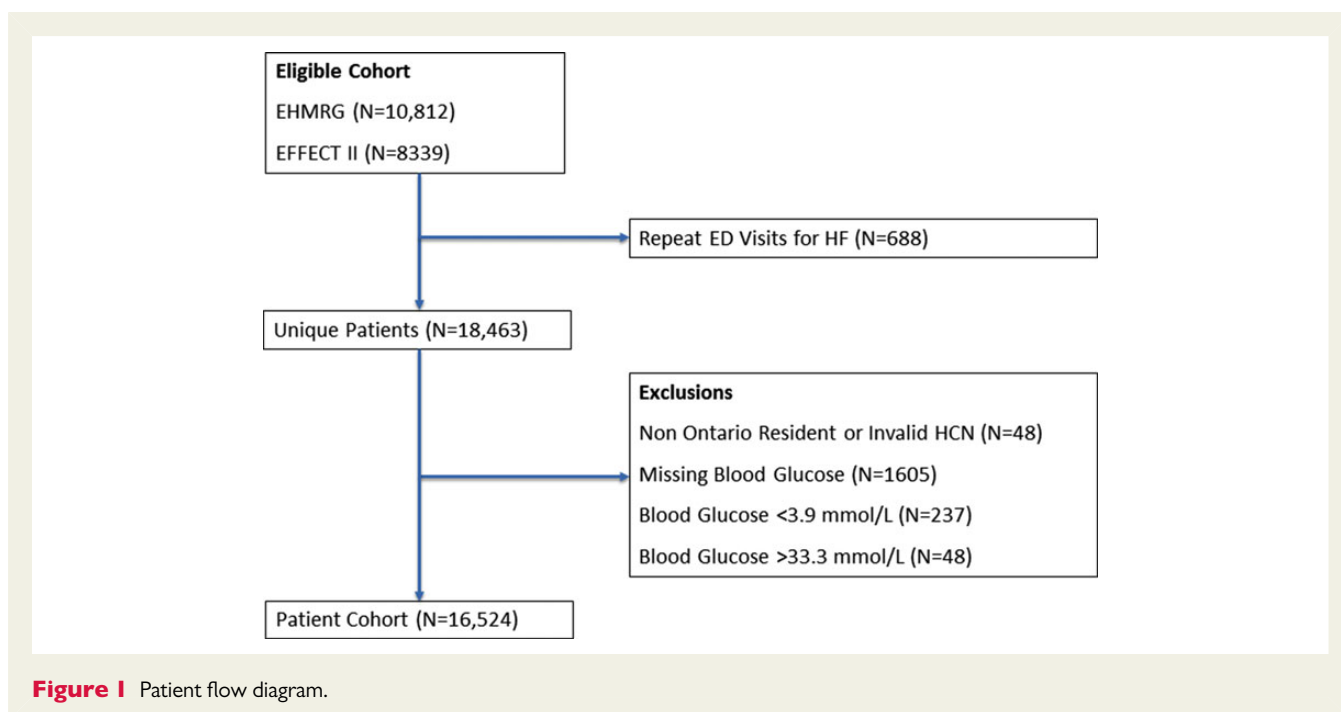


Table 1 Baseline characteristics

	Pre-existing diabetes (N = 7249)	No pre-existing diabetes (N = 9275)	P-value
Patient characteristics			
Age (years)	76 (68–82)	81 (73–86)	<0.001
Weight (kg)	82 (68–95)	72 (60–84)	<0.001
Men, n (%)	3826 (52.8%)	4289 (46.2%)	<0.001
Transported by EMS, n (%)	3323 (45.8%)	4207 (45.4%)	0.537
Presenting features			
Systolic blood pressure (mmHg)	146 (126–168)	141 (123–163)	<0.001
Diastolic blood pressure (mmHg)	76 (65–89)	78 (67–90)	<0.001
Heart rate (beats/min)	86 (71–102)	88 (72–105)	<0.001
Respiratory rate (breath/min)	22 (20–28)	22 (20–26)	0.004
Oxygen saturation (%)	95 (91–97)	95 (92–97)	0.023
Comorbidities, n (%)			
Previous HF hospitalization	2568 (35.4%)	2573 (27.7%)	<0.001
Myocardial infarction	1237 (17.1%)	1125 (12.1%)	<0.001
Coronary artery disease	4243 (58.5%)	4399 (47.4%)	<0.001
Previous coronary revascularization ^a	1746 (24.1%)	1458 (15.7%)	<0.001
Current smoker	638 (8.8%)	861 (9.3%)	0.285
Anaemia	343 (4.7%)	365 (3.9%)	0.012
Chronic lung disease	1582 (21.8%)	2075 (22.4%)	0.400
Hypertension	5022 (69.3%)	5320 (57.4%)	<0.001
Stroke or transient ischaemic attack	1325 (18.3%)	1548 (16.7%)	0.008
Peripheral vascular disease	1019 (14.1%)	840 (9.1%)	<0.001
Cirrhotic liver disease	142 (2.0%)	117 (1.3%)	<0.001
Cognitive impairment	573 (7.9%)	1012 (10.9%)	<0.001
Cancer	753 (10.4%)	1210 (13.0%)	<0.001
Dialysis	195 (2.7%)	155 (1.7%)	<0.001
LVEF			
≤45%	3857 (53.2%)	4389 (47.3%)	<0.001
>45%	3339 (46.1%)	4820 (52.0%)	
Laboratory features			
Haemoglobin (g/L)	120 (107–134)	126 (112–139)	<0.001
Sodium (mmol/L)	139 (136–141)	139 (136–142)	<0.001
Potassium (mmol/L)	4 (4–5)	4 (4–5)	<0.001
Creatinine (μmol/L)	111 (86–154)	101 (81–132)	<0.001
Non-normal troponin, n (%) ^b	1117 (15.4%)	1080 (11.6%)	<0.001
Electrocardiographic features			
Atrial fibrillation/flutter, n (%)	1854 (25.6%)	3009 (32.4%)	<0.001
QRS duration (ms)	100 (88–129)	100 (86–130)	0.001
Cardiac medications pre-admission, n (%)			
ACE inhibitor or ARB	4650 (64.1%)	4666 (50.3%)	<0.001
β-Adrenoreceptor antagonist	3609 (49.8%)	3890 (41.9%)	<0.001
Digoxin	1381 (19.1%)	1681 (18.1%)	0.128
Furosemide	4110 (56.7%)	4386 (47.3%)	<0.001
Metolazone	173 (2.4%)	115 (1.2%)	<0.001
Spirolactone	666 (9.2%)	712 (7.7%)	<0.001
Antiplatelet agent (aspirin or clopidogrel)	3263 (45.0%)	3471 (37.4%)	<0.001
Warfarin	1952 (26.9%)	2575 (27.8%)	0.232
HMG-coA reductase inhibitor	3607 (49.8%)	2858 (30.8%)	<0.001

IQR, interquartile range; EMS, emergency medical services; ARB, angiotensin receptor blocker; HMG-coA, 5-hydroxy-3-methylglutaryl-coenzyme A.

^aPercutaneous coronary intervention or coronary artery bypass graft surgery.

^bGreater than the upper limit of normal.

Table 2 Association between presentation blood glucose and 30-day mortality

Group	Outcome	Presentation blood glucose (mmol/L)	Events/patients	Rate per 100 pyrs (95% CI)	Adjusted HR (95% CI)	P-value
Pre-existing diabetes	All-cause mortality	3.9–6.1	81/1271	6.4 (5.1–7.9)	Referent	NA
		>6.1–7.8	105/1457	7.2 (5.9–8.7)	1.13 (0.82–1.56)	0.446
		>7.8–9.4	78/1254	6.2 (4.9–7.8)	1.21 (0.86–1.70)	0.284
		>9.4–11.1	56/981	5.7 (4.3–7.4)	0.96 (0.66–1.39)	0.821
		>11.1	196/2286	8.6 (7.4–9.9)	1.48 (1.10–2.00)	0.010
	Cardiovascular mortality	3.9–6.1	44/1271	3.5 (2.5–4.7)	Referent	NA
		>6.1–7.8	62/1457	4.3 (3.3–5.5)	1.21 (0.80–1.83)	0.373
		>7.8–9.4	46/1254	3.7 (2.7–4.9)	1.16 (0.74–1.82)	0.517
		>9.4–11.1	31/981	3.2 (2.2–4.5)	0.90 (0.55–1.48)	0.683
		>11.1	114/2286	5.0 (4.1–6.0)	1.44 (0.97–2.14)	0.068
No pre-existing diabetes	All-cause mortality	3.9–6.1	270/4023	6.7 (5.9–7.6)	Referent	NA
		>6.1–7.8	273/3089	8.8 (7.8–10.0)	1.26 (1.05–1.50)	0.013
		>7.8–9.4	150/1171	12.8 (10.8–15.0)	1.47 (1.18–1.82)	<0.001
		>9.4–11.1	60/468	12.8 (9.8–16.5)	1.41 (1.04–1.90)	0.027
		>11.1	83/524	15.8 (12.6–19.6)	1.50 (1.11–2.02)	0.008
	Cardiovascular mortality	3.9–6.1	182/4023	4.5 (3.9–5.2)	Referent	NA
		>6.1–7.8	190/3089	6.2 (5.3–7.1)	1.28 (1.03–1.59)	0.024
		>7.8–9.4	103/1171	8.8 (7.2–10.7)	1.54 (1.18–1.99)	0.001
		>9.4–11.1	44/468	9.4 (6.8–12.6)	1.64 (1.16–2.33)	0.006
		>11.1	58/524	11.1 (8.4–14.3)	1.51 (1.05–2.18)	0.025

pyrs, person-years.

Table 3 Association between presentation blood glucose and hospitalization

Outcome	Presentation blood glucose (mmol/L)	Events/patients	Rate per 100 pyrs (95% CI)	Adjusted HR (95% CI)	P-value
Cardiovascular hospitalization	3.9–6.1	3506/5294	34.7 (33.6–35.9)	Referent	NA
	>6.1–7.8	3010/4546	37.4 (36.1–38.8)	1.03 (0.98–1.09)	0.263
	>7.8–9.4	1588/2425	36.8 (35.0–38.6)	1.02 (0.95–1.08)	0.627
	>9.4–11.1	1001/1449	43.7 (41.1–46.5)	1.12 (1.04–1.21)	0.004
	>11.1	1954/2810	43.8 (41.9–45.8)	1.09 (1.02–1.17)	0.009
Heart failure hospitalization	3.9–6.1	2637/5294	20.7 (19.9–21.5)	Referent	NA
	>6.1–7.8	2281/4546	22.6 (21.7–23.5)	1.03 (0.97–1.09)	0.406
	>7.8–9.4	1205/2425	22.2 (21.0–23.5)	1.01 (0.94–1.08)	0.849
	>9.4–11.1	792/1449	27.0 (25.1–28.9)	1.15 (1.05–1.25)	0.002
	>11.1	1590/2810	28.1 (26.8–29.6)	1.15 (1.07–1.24)	<0.001

pyrs, person-years.

blood glucose exceeded 11.1 mmol/L, the adjusted HR for diabetes-related hospitalization was 1.39 (95% CI 1.20–1.61; $P < 0.001$).

Association between presentation blood glucose and *de novo* diabetes

Among patients without pre-existing diabetes (median follow-up 823 [IQR: 195–1931] days), there was a statistically significant and progressively increased risk of *de novo* diabetes with higher presentation blood glucose with adjusted HRs ranging from 1.61 (>6.1–7.8 mmol/L) to 3.61 (>11.1 mmol/L) as shown in Table 4 (all $P < 0.001$). In sex-specific analyses, the association with *de novo* diabetes in men and

women remained significant with adjusted time-to-diagnosis curves shown in Figure 2 (Supplementary material online, Appendix, Table SD).

For each 1 mmol/L increase in blood glucose, the adjusted HR for *de novo* diabetes diagnosis was 1.14 (95% CI 1.12–1.16, $P < 0.001$), differing marginally by sex (P -interaction = 0.046). For each 1 mmol/L increase in presentation blood glucose, the HR for *de novo* diabetes was 1.18 (95% CI 1.14–1.23) in men and 1.13 (95% CI: 1.10–1.16) in women (both $P < 0.001$). There were no other significant clinical subgroup interactions for *de novo* diabetes (Figure 3).

For every 30 patients whose presentation blood glucose was >6.1–7.8 mmol/L, 14 patients >7.8–9.4 mmol/L, 9 patients >9.4–11.1 mmol/L, and 11 patients >11.1 mmol/L, one new case

Table 4 Association between presentation blood glucose and diabetes-related outcomes

Group	Outcome	Presentation blood glucose (mmol/L)	Events/ patients	Rate per 100 pyrs (95% CI)	Adjusted HR (95% CI)	P-value
Pre-existing diabetes	Diabetes-related hospitalizations	3.9–6.1	316/1271	9.0 (8.0–10.1)	Referent	NA
		>6.1–7.8	301/1457	7.2 (6.4–8.1)	0.86 (0.72–1.02)	0.079
		>7.8–9.4	343/1254	9.3 (8.4–10.4)	1.09 (0.93–1.29)	0.289
		>9.4–11.1	260/981	9.7 (8.5–10.9)	1.06 (0.89–1.27)	0.508
		>11.1	772/2286	13.0 (12.1–13.9)	1.39 (1.20–1.61)	<0.001
No pre-existing diabetes	New diabetes diagnosis	3.9–6.1	405/4023	3.1 (2.8–3.4)	Referent	NA
		>6.1–7.8	420/3089	4.6 (4.2–5.1)	1.61 (1.39–1.87)	<0.001
		>7.8–9.4	197/1171	6.4 (5.5–7.3)	2.42 (2.01–2.92)	<0.001
		>9.4–11.1	99/468	8.8 (7.2–10.8)	3.76 (2.97–4.78)	<0.001
		>11.1	99/524	7.7 (6.3–9.4)	3.61 (2.78–4.68)	<0.001

pyrs, person-years.

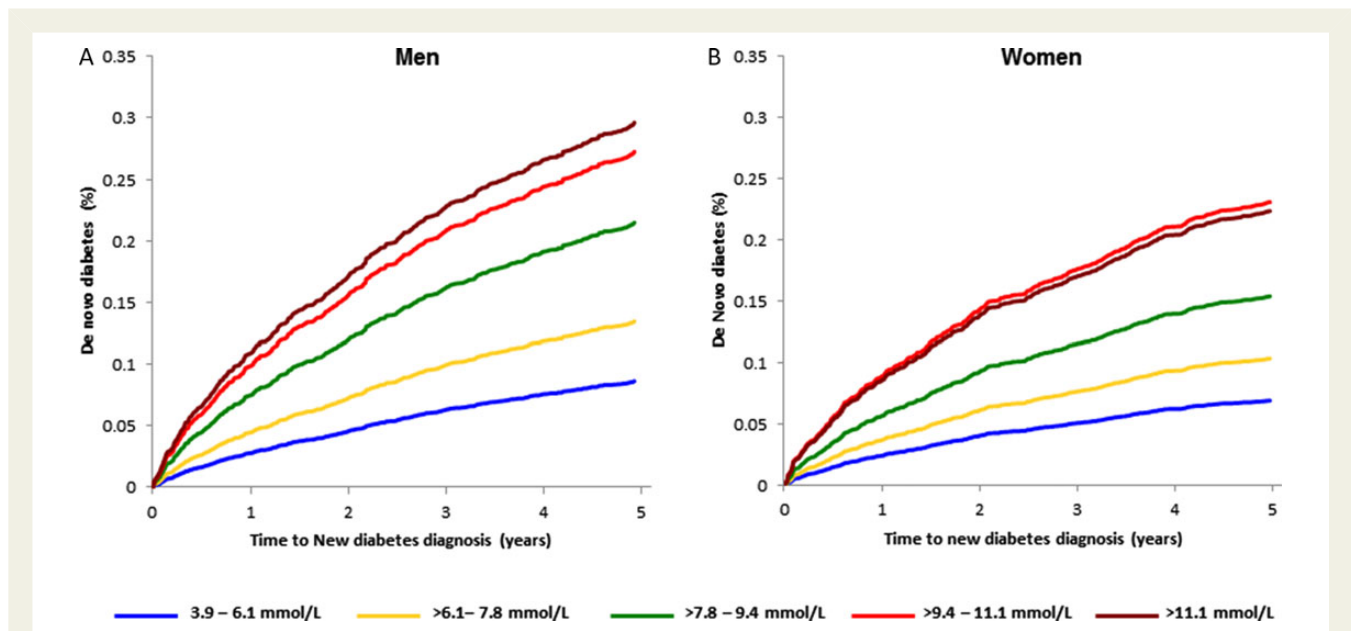


Figure 2 Adjusted sex-stratified time to *de novo* diabetes in (A) men and (B) women by presentation blood glucose category.

of diabetes was diagnosed within 5 years (Supplementary material online, Appendix, Table SE).

Sensitivity analyses

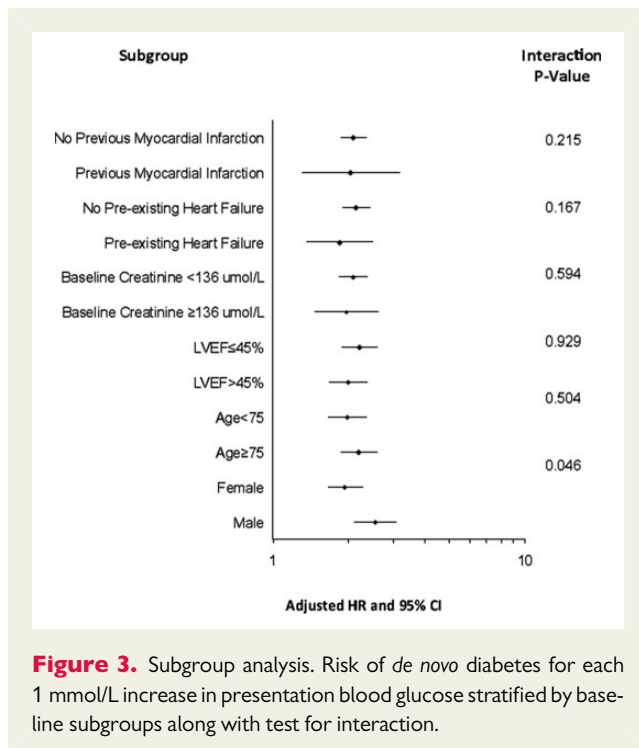
When patients who were discharged from the ED ($n = 5791$, 65.7%) were excluded from the analysis, the results remained comparable (Supplementary material online, Appendix, Tables SF and SG).

Discussion

In this large, population-based cohort of patients presenting to an ED with AHFS, we found that presentation blood glucose exceeding 11.1 mmol/L in patients with pre-existing diabetes was associated with increased risk of 30-day all-cause death and diabetes-related hospitalizations. In patients without pre-existing diabetes, the risks

of 30-day all-cause and cardiovascular mortality were increased, beginning to rise within normoglycaemia (>6.1 mmol/L). By 1 year, mortality risk remained elevated, albeit attenuated among those without pre-existing diabetes. A presentation blood glucose exceeding 9.4 mmol/L was also associated with increased risks of HF and cardiovascular hospitalization. Furthermore, presentation blood glucose at the upper-end of normoglycaemia was associated with over 1.6-fold risk of *de novo* diabetes while higher values conferred up to 4-fold risk of a new diabetes diagnosis in both men and women.

Two recent studies examining the association between blood glucose and mortality among patients with AHFS demonstrated contrasting results. In a large cohort of elderly Medicare beneficiaries, there was no significant association between presentation blood glucose >6.1 and 30-day mortality.³ Those with co-morbid conditions, such as end-stage renal disease, valvular heart disease, cirrhosis,



immunosuppression, and cancer, accounted for 16% of the analysable population but were excluded. In contrast, a large multinational European and North American cohort found a strong association between 30-day mortality and blood glucose elevation, defined as >7 mmol/L, in patients without diabetes and >10 mmol/L in diabetes patients.⁴ The differences between studies may in part, be explained by variations in demographics and co-morbidities between the three cohorts. Our population-based sample was older with more co-morbid coronary artery disease, renal impairment, and COPD than the latter study,⁴ but younger with fewer of the above comorbidities than the former.³

Diabetes is associated with increased mortality risk and significant morbidity, including hospitalizations for diabetes-related complications.²³ Effective primary care offers the potential to prevent diabetes-related hospitalizations and early detection of high-risk patients may further reduce this risk.²⁴ Our results indicate that blood glucose concentration at hospital presentation is prognostically important in patients with AHFS, as demonstrated by higher risk of early mortality and increased risk of diabetes-related hospitalizations in longer-term follow-up among diabetes patients. Hyperglycaemia at the time of AHFS presentation may be a surrogate for the severity of the acute inflammatory state or a marker of poor outpatient glycaemic control. Interestingly, unadjusted 30-day mortality rates were higher amongst those without pre-existing diabetes, suggesting that hyperglycaemia may have been better recognized and treated when diabetes was a known condition prior to admission.

Diabetes is an established risk factor for HF, but it has not previously been reported that HF predisposes to *de novo* diabetes.²⁵ Chronic HF is characterized by loss of skeletal muscle, which is the major site of glucose utilization, promoting an insulin resistant state.²⁶ Insulin resistance may be further exacerbated by the pro-inflammatory state associated with HF.²⁷ Physiologic studies have shown that worse

NYHA functional status in HF patients without diabetes is associated with higher fasting glucose and insulin levels compared with patients with less severe symptoms.²⁸ Clinical studies also support the notion that HF and particularly worse functional status (NYHA class III–IV symptoms) is associated with increased risk of new-onset diabetes.^{29,30}

We present a novel finding in AHFS, demonstrating an association between elevated blood glucose at presentation with subsequent incident diabetes. Our findings are consistent with other studies in different clinical populations such as critically ill patients,³¹ and men with AMI³² where a blood glucose exceeding 7.8 mmol/L was predictive of subsequent diabetes risk. Unlike the latter study conducted primarily in men,³² the relationship we observed was present in men and women with AHFS at an even lower blood glucose threshold of 6.1 mmol/L, irrespective of antecedent HF or myocardial infarction. Based on our cohort, a lower blood glucose threshold of 6.1 mmol/L, rather than 7.8 mmol/L, has substantial implications because this more stringent criterion for normalcy identifies an additional 30% of patients at risk of future diabetes for whom heightened surveillance may be warranted.

Our findings have several important implications for clinical practice. Thirty-day mortality is high in AHFS and interventions to reduce this risk are needed. Blood glucose at ED presentation identifies a large group of patients with diabetes and HF who are at risk of further deterioration because of poor glycaemic control or insulin resistance, and in non-diabetes patients, may allow for earlier recognition and monitoring for the development of incident disease. Examination of presentation blood glucose may allow for more timely primary and secondary intervention strategies to prevent future diabetes-related hospitalizations and complications. In patients with AMI, a blood glucose exceeding 7.8 mmol/L in non-diabetic patients was found to be predictive of future diabetes risk.³² The European Society of Cardiology now recommends that all patients presenting with AMI and any degree of hyperglycaemia be tested for diabetes prior to discharge.³³ Our findings extend the relationship to AHFS and add further strength to the HF guideline recommendations of the need for measurement of blood glucose and its prognostic importance.³⁴ Thus, blood glucose at presentation may serve as a screen to identify high-risk patients who warrant formal testing for diabetes allowing for prompt referral to prevent further morbidity and mortality.

Our study is not without limitations. We examined presentation blood glucose and did not use alternative metrics, such as mean in-hospital glucose, to evaluate hyperglycaemia. Others, however, have shown the incremental benefit of such metrics is marginal.³² Ascertainment of *de novo* diabetes was clinically dependent, and thus diagnostic testing was at the discretion of the caring physician, rather than protocol driven. However, clinically driven screening likely attenuated the observed association between presentation blood glucose and *de novo* diabetes. Haemoglobin A1C is not routinely performed in hospital, and it is conceivable that some diabetes patients may have been classified as non-diabetic if they had normal levels of blood glucose but elevated (and unmeasured) haemoglobin A1C. Additionally, discharge blood glucose was not collected in our study, which may have explained further outcome variations when added to presentation measures. However, the effects of both of the above limitations would be attenuation of our estimated hazard

ratios, and availability of these measures would likely have resulted in greater magnitude of effect. Finally, due to small numbers with presentation blood glucose <3.9 or >33.3 mmol/L, a robust analysis of these patients could not be performed.

In conclusion, among AHFS patients without prior diabetes, modestly elevated blood glucose (>6.1 mmol/L) at ED presentation conferred higher risks of early all-cause and cardiovascular mortality and *de novo* diabetes diagnosis. Among diabetes patients presenting with AHFS, a blood glucose exceeding 11.1 mmol/L, was associated with higher risks of early mortality and long-term diabetes-related hospitalization. The acute measurement of blood glucose at HF presentation provides prognostic value and may be a potential target to improve outcomes in patients with AHFS.

Supplementary material

Supplementary material is available at *European Heart Journal* online.

Acknowledgements

From the Institute for Clinical Evaluative Sciences (M.S., X.W., P.C.A., L.L.L., J.V.T., D.S.L.), Women's College Hospital (L.L.L.), Mt. Sinai Hospital (G.E.N.), Sunnybrook Health Sciences Centre (J.V.T.), Institute for Health Policy, Management, and Evaluation (P.C.A., J.V.T., D.S.L.), Schulich Heart Research Program, Sunnybrook Research Institute (P.C.A.), Peter Munk Cardiac Centre of the University Health Network—Toronto General Hospital (G.E.N., D.S.L.), University of Toronto, Toronto, Canada, and the National Heart, Lung, and Blood Institute's Framingham Heart Study, Framingham, MA (R.S.V.) and Boston University School of Medicine, Boston, MA (R.S.V.).

Funding

Supported by operating grant MOP 114937 from the Canadian Institutes of Health Research (CIHR), Career Investigator Awards from the Heart and Stroke Foundation of Ontario (P.C.A., J.V.T.), New Investigator Award from the Canadian Institutes of Health Research (L.L.L.), a Canada Research Chair in Health Services Research (J.V.T.), and a CIHR Clinician-Scientist Award (D.S.L.). Funding to pay the Open Access publication charges for this article was provided by the Canadian Institutes of Health Research (CIHR).

Conflict of interest: none declared.

References

- Lee DS, Schull MJ, Alter DA, Austin PC, Laupacis A, Chong A, Tu JV, Stukel TA. Early deaths in patients with heart failure discharged from the emergency department: a population-based analysis. *Circ Heart Fail* 2010;**3**:228–235.
- Lee DS, Austin PC, Rouleau JL, Liu PP, Naimark D, Tu JV. Predicting mortality among patients hospitalized for heart failure: derivation and validation of a clinical model. *JAMA* 2003;**290**:2581–2587.
- Kosiborod M, Inzucchi SE, Spertus JA, Wang Y, Masoudi FA, Havranek EP, Krumholz HM. Elevated admission glucose and mortality in elderly patients hospitalized with heart failure. *Circulation* 2009;**119**:1899–1907.
- Mebazaa A, Gayat E, Lassus J, Meas T, Mueller C, Maggioni A, Peacock F, Spinar J, Harjola VP, van Kimmenade R, Pathak A, Mueller T, Tavazzi L, Disomma S, Metra M, Pascual-Figal D, Laribi S, Logeart D, Noura S, Sato N, Parenica J, Deye N, Boukef R, Collet C, Van den Berghe G, Cohen-Solal A, Januzzi JL Jr. Association between elevated blood glucose and outcome in acute heart failure: results from an international observational cohort. *J Am Coll Cardiol* 2013;**61**:820–829.
- Kosiborod M, Rathore SS, Inzucchi SE, Masoudi FA, Wang Y, Havranek EP, Krumholz HM. Admission glucose and mortality in elderly patients hospitalized with acute myocardial infarction: implications for patients with and without recognized diabetes. *Circulation* 2005;**111**:3078–3086.
- Boudina S, Abel ED. Diabetic cardiomyopathy revisited. *Circulation* 2007;**115**:3213–3223.
- Xu J, Zou MH. Molecular insights and therapeutic targets for diabetic endothelial dysfunction. *Circulation* 2009;**120**:1266–1286.
- Tu JV, Donovan LR, Lee DS, Wang JT, Austin PC, Alter DA, Ko DT. Effectiveness of public report cards for improving the quality of cardiac care: the EFFECT study: a randomized trial. *JAMA* 2009;**302**:2330–2337.
- Lee DS, Stitt A, Austin PC, Stukel TA, Schull MJ, Chong A, Newton GE, Lee JS, Tu JV. Prediction of heart failure mortality in emergent care: a cohort study. *Ann Intern Med* 2012;**156**:767–775.
- McKee PA, Castelli WP, McNamara PM, Kannel WB. The natural history of congestive heart failure: the Framingham study. *N Engl J Med* 1971;**285**:1441–1446.
- Lee DS, Stukel TA, Austin PC, Alter DA, Schull MJ, You JJ, Chong A, Henry D, Tu JV. Improved outcomes with early collaborative care of ambulatory heart failure patients discharged from the emergency department. *Circulation* 2010;**122**:1806–1814.
- Juurink D, Preyra C, Croxford R, Chong A, Austin P, Tu J, Laupacis A. *Canadian Institute for Health Information Discharge Abstract Database: A Validation Study*. Toronto: Institute for Clinical Evaluative Sciences; 2006.
- Austin PC, Daly PA, Tu JV. A multicenter study of the coding accuracy of hospital discharge administrative data for patients admitted to cardiac care units in Ontario. *Am Heart J* 2002;**144**:290–296.
- Hux JE, Ivis F, Flintoft V, Bica A. Diabetes in Ontario: determination of prevalence and incidence using a validated administrative data algorithm. *Diabetes Care* 2002;**25**:512–516.
- Lipscombe LL, Hux JE. Trends in diabetes prevalence, incidence, and mortality in Ontario, Canada 1995–2005: a population-based study. *Lancet* 2007;**369**:750–756.
- Booth GL, Lipscombe LL, Bhattacharyya O, Feig DS, Shah BR, Johns A, Degani N, Ko B, Bierman AS. *Diabetes. Project for an Ontario Women's Health Evidence-Based Report: Volume 2*. Toronto, 2010.
- Krumholz HM, Wang Y, Mattera JA, Wang Y, Han LF, Ingber MJ, Roman S, Normand SL. An administrative claims model suitable for profiling hospital performance based on 30-day mortality rates among patients with heart failure. *Circulation* 2006;**113**:1693–1701.
- Pencina MJ, D'Agostino RB Sr, Steyerberg EW. Extensions of net reclassification improvement calculations to measure usefulness of new biomarkers. *Stat Med* 2011;**30**:11–21.
- Cook RJ, Sackett DL. The number needed to treat: a clinically useful measure of treatment effect. *BMJ* 1995;**310**:452–454.
- Fay MP, Feuer EJ. Confidence intervals for directly standardized rates: a method based on the gamma distribution. *Stat Med* 1997;**16**:791–801.
- Ghali WA, Quan H, Brant R, van Melle G, Norris CM, Faris PD, Galbraith PD, Knudtson ML. Comparison of 2 methods for calculating adjusted survival curves from proportional hazards models. *JAMA* 2001;**286**:1494–1497.
- Ho JE, Gona P, Pencina MJ, Tu JV, Austin PC, Vasan RS, Kannel WB, D'Agostino RB, Lee DS, Levy D. Discriminating clinical features of heart failure with preserved vs. reduced ejection fraction in the community. *Eur Heart J* 2012;**33**:1734–1741.
- Wang J, Imai K, Engelgau MM, Geiss LS, Wen C, Zhang P. Secular trends in diabetes-related preventable hospitalizations in the United States, 1998–2006. *Diabetes Care* 2009;**32**:1213–1217.
- Bindman AB, Grumbach K, Osmond D, Komaromy M, Vranizan K, Lurie N, Billings J, Stewart A. Preventable hospitalizations and access to health care. *JAMA* 1995;**274**:305–311.
- Kannel WB, Hjortland M, Castelli WP. Role of diabetes in congestive heart failure: the Framingham study. *Am J Cardiol* 1974;**34**:29–34.
- Toth MJ, Gottlieb SS, Fisher ML, Poehlman ET. Skeletal muscle atrophy and peak oxygen consumption in heart failure. *Am J Cardiol* 1997;**79**:1267–1269.
- Swan JW, Anker SD, Walton C, Godsland IF, Clark AL, Leyva F, Stevenson JC, Coats AJ. Insulin resistance in chronic heart failure: relation to severity and etiology of heart failure. *J Am Coll Cardiol* 1997;**30**:527–532.
- Suskin N, McKelvie RS, Burns RJ, Latini R, Pericak D, Probstfeld J, Rouleau JL, Sigouin C, Solymoss CB, Tsuyuki R, White M, Yusuf S. Glucose and insulin abnormalities relate to functional capacity in patients with congestive heart failure. *Eur Heart J* 2000;**21**:1368–1375.
- Amato L, Paolisso G, Cacciatore F, Ferrara N, Ferrara P, Canonico S, Varricchio M, Rengo F. Congestive heart failure predicts the development of non-insulin-dependent diabetes mellitus in the elderly. The Osservatorio Geriatrico Regione Campania Group. *Diabetes Metab* 1997;**23**:213–218.
- Tenenbaum A, Motro M, Fisman EZ, Leor J, Freimark D, Boyko V, Mandelzweig L, Adler Y, Sherer Y, Behar S. Functional class in patients with heart failure is associated with the development of diabetes. *Am J Med* 2003;**114**:271–275.
- Gornik I, Vujaklija-Brajkovic A, Renar IP, Gasparovic V. A prospective observational study of the relationship of critical illness associated hyperglycaemia in medical ICU patients and subsequent development of type 2 diabetes. *Crit Care* 2010;**14**:R130.

32. Shore S, Borgerding JA, Gyls-Colwell I, McDermott K, Michael HP, Tillquist MN, Lowy E, McGuire DK, Stolker JM, Arnold SV, Kosiborod M, Maddox TM. Association between admission hyperglycemia during hospitalization for acute myocardial infarction and subsequent diabetes: insights from the veterans administration cardiac care follow-up clinical study. *Diabetes Care* 2014; **37**:409–418.
33. Steg PG, James SK, Atar D, Badano LP, Blomstrom-Lundqvist C, Borger MA, Di MC, Dickstein K, Ducrocq G, Fernandez-Aviles F, Gershlick AH, Giannuzzi P, Halvorsen S, Huber K, Juni P, Kastrati A, Knuuti J, Lenzen MJ, Mahaffey KW, Valgimigli M, van't Hof A, Widimsky P, Zahger D. ESC Guidelines for the management of acute myocardial infarction in patients presenting with ST-segment elevation. *Eur Heart J* 2012;**33**:2569–2619.
34. McMurray JJ, Adamopoulos S, Anker SD, Auricchio A, Bohm M, Dickstein K, Falk V, Filippatos G, Fonseca C, Gomez-Sanchez MA, Jaarsma T, Kober L, Lip GY, Maggioni AP, Parkhomenko A, Pieske BM, Popescu BA, Ronnevik PK, Rutten FH, Schwitzer J, Seferovic P, Stepinska J, Trindade PT, Voors AA, Zannad F, Zeiher A. ESC Guidelines for the diagnosis and treatment of acute and chronic heart failure 2012: The Task Force for the Diagnosis and Treatment of Acute and Chronic Heart Failure 2012 of the European Society of Cardiology. Developed in collaboration with the Heart Failure Association (HFA) of the ESC. *Eur Heart J* 2012;**33**:1787–1847.